

Capturing medical practice with indication embeddings

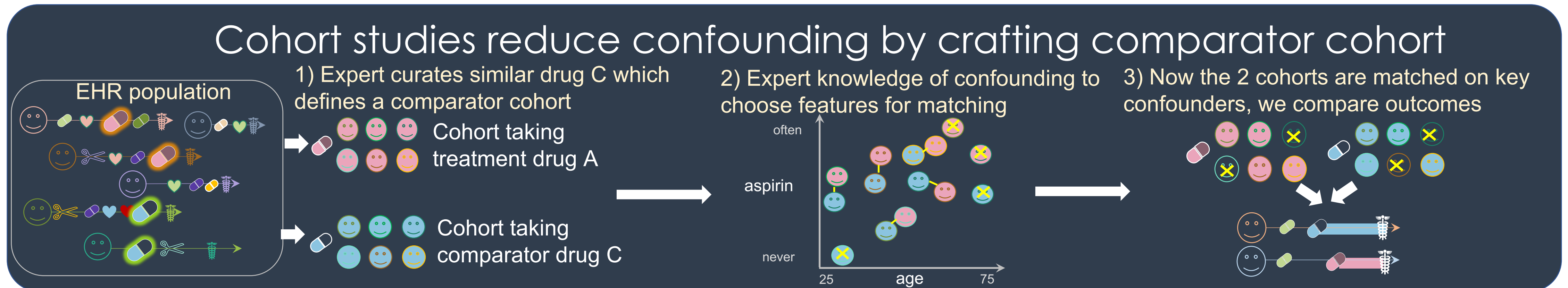
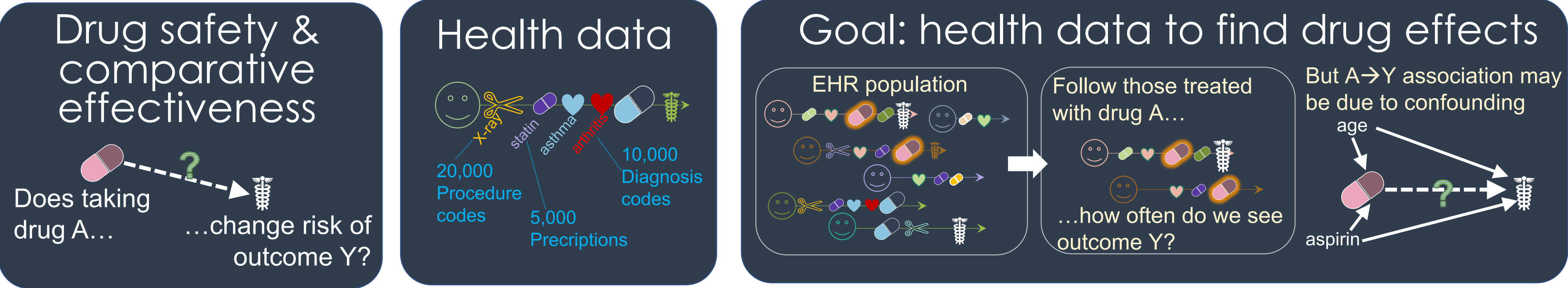
Rachel Melamed

Biology @ UMass Lowell

Rachel_Melamed@uml.edu

<https://rdmelamed.github.io/>

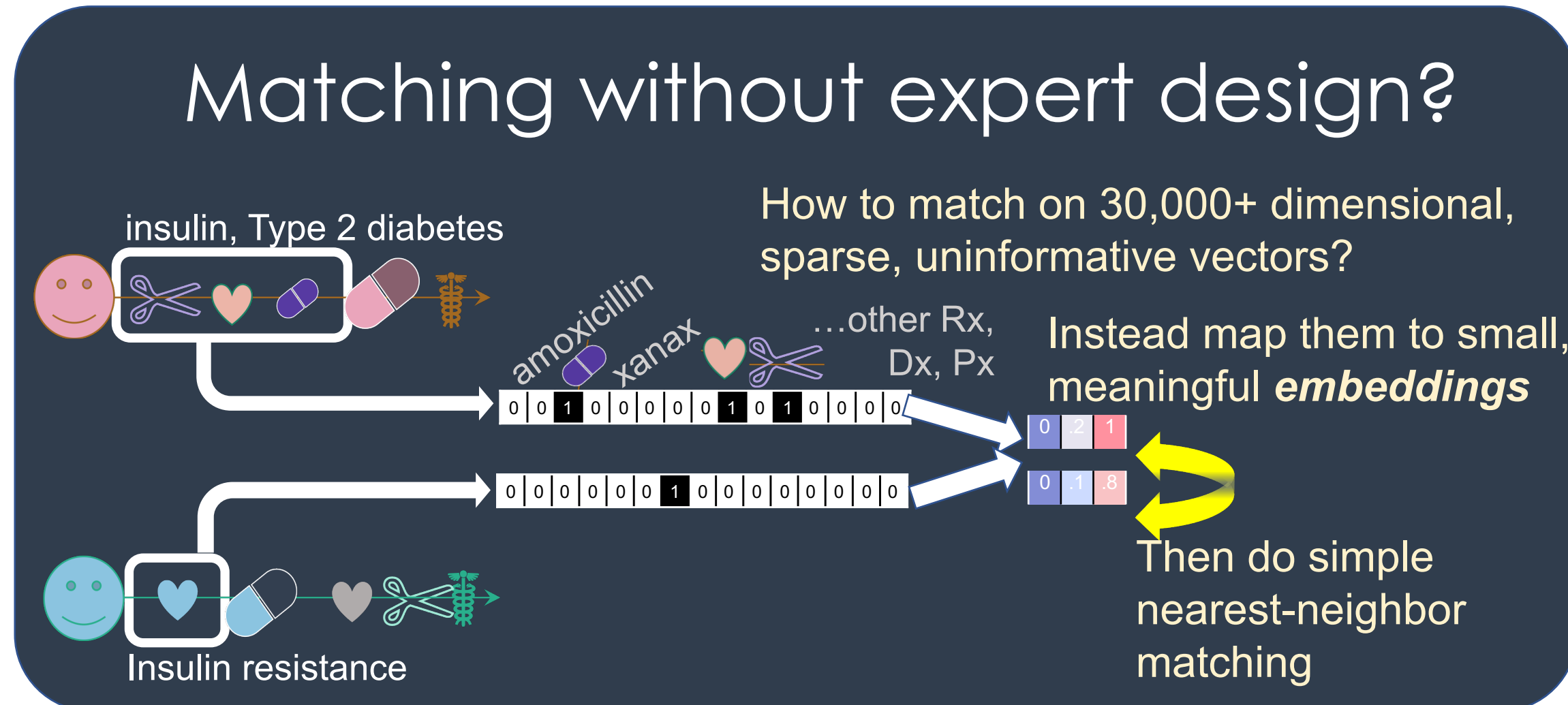
@rdmelamed



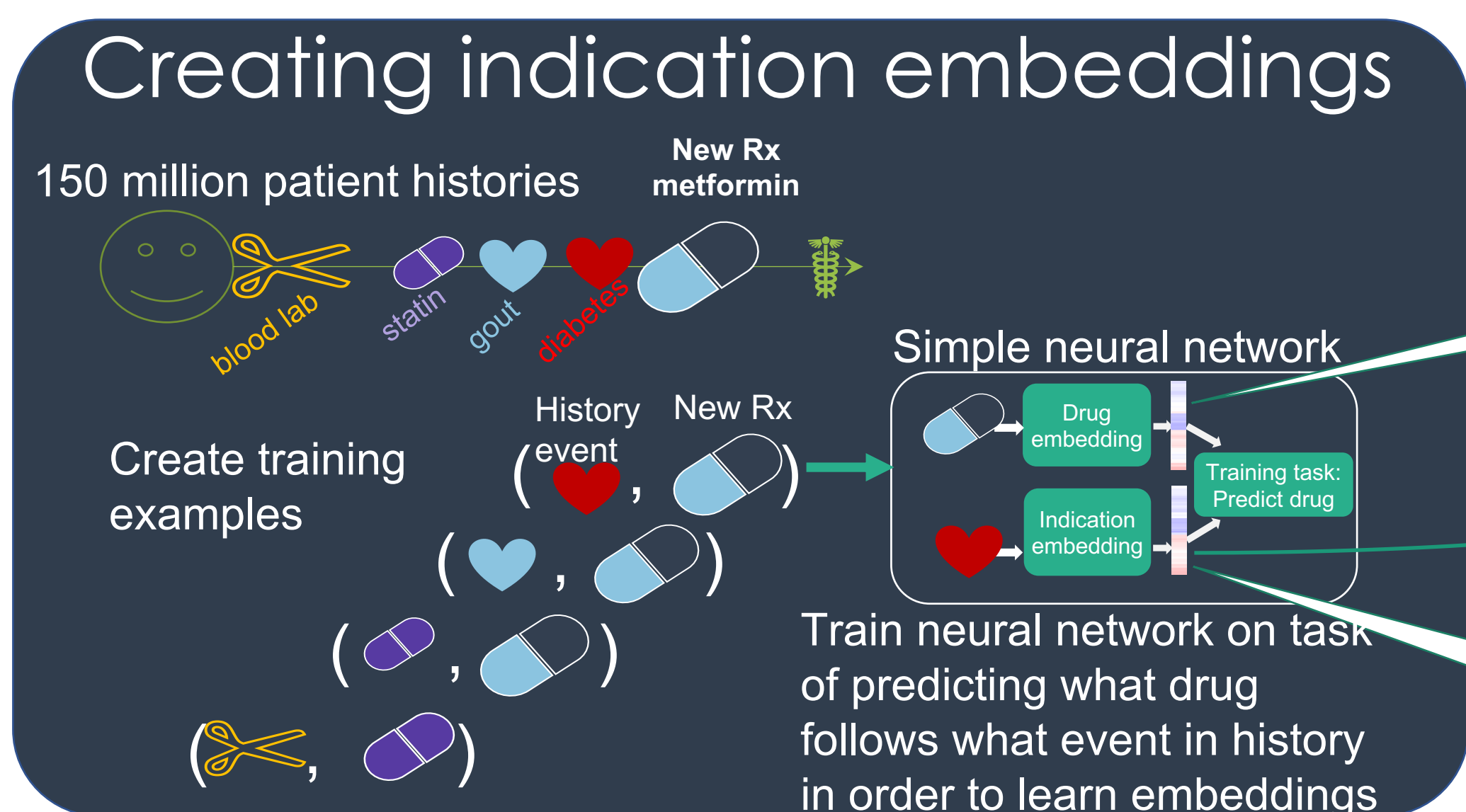
Cohort study relies on expert design

Domain experts needed to:

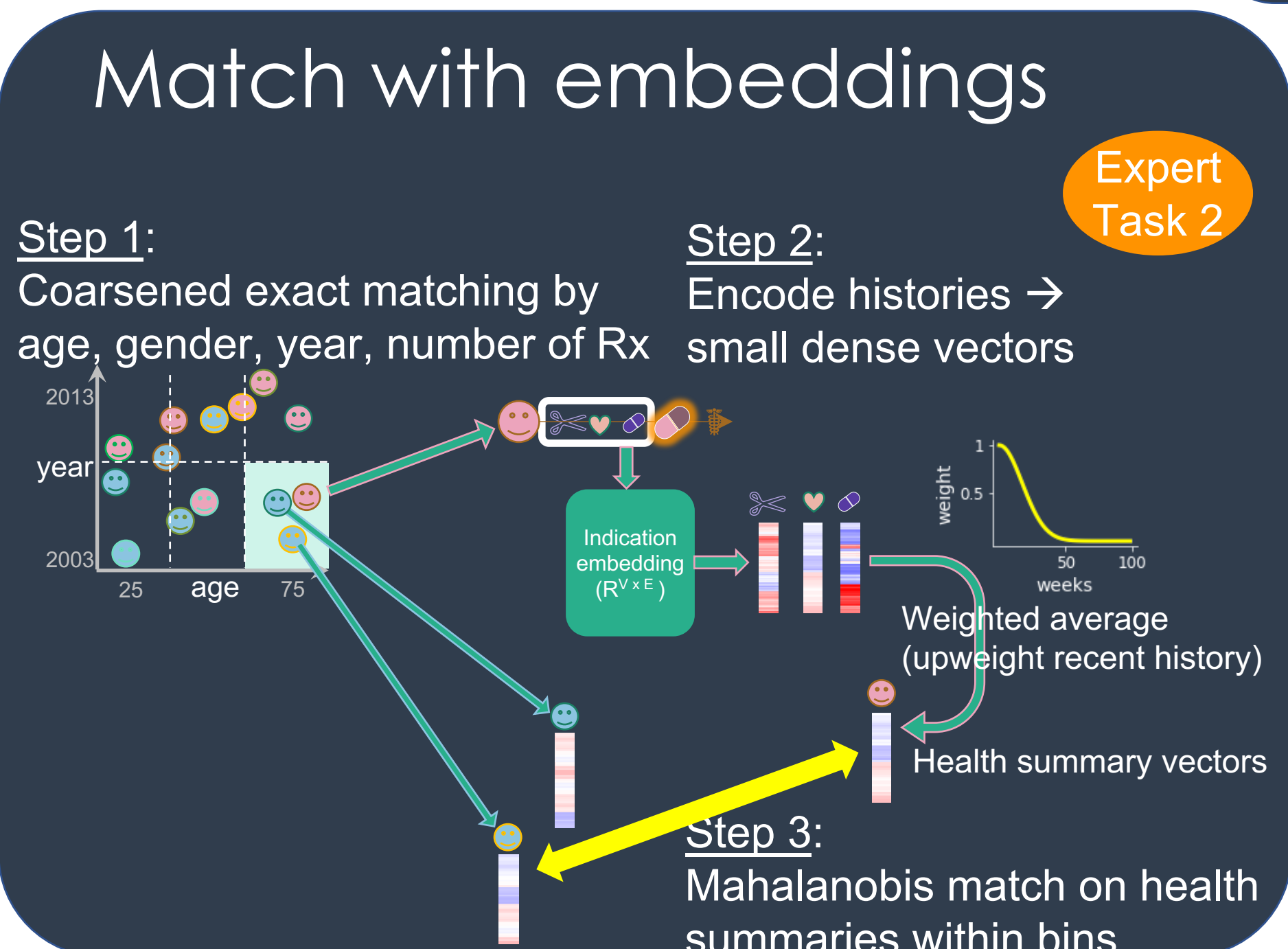
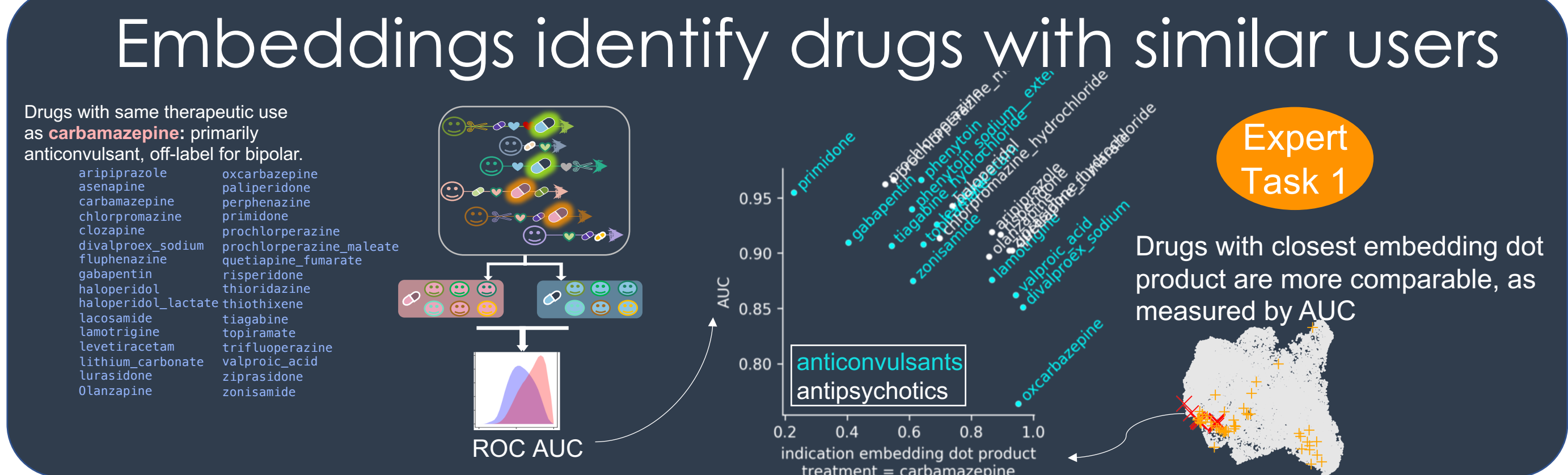
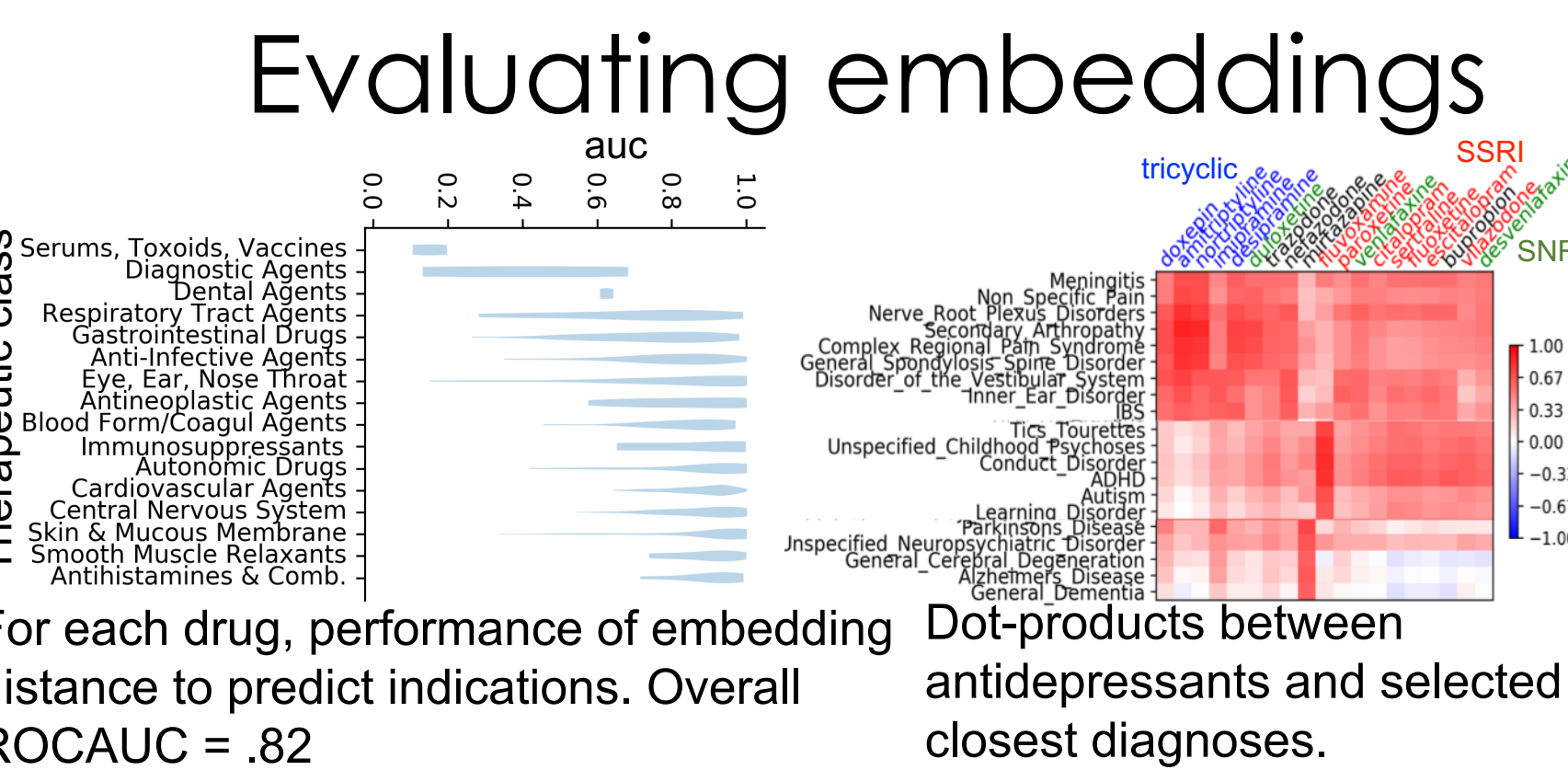
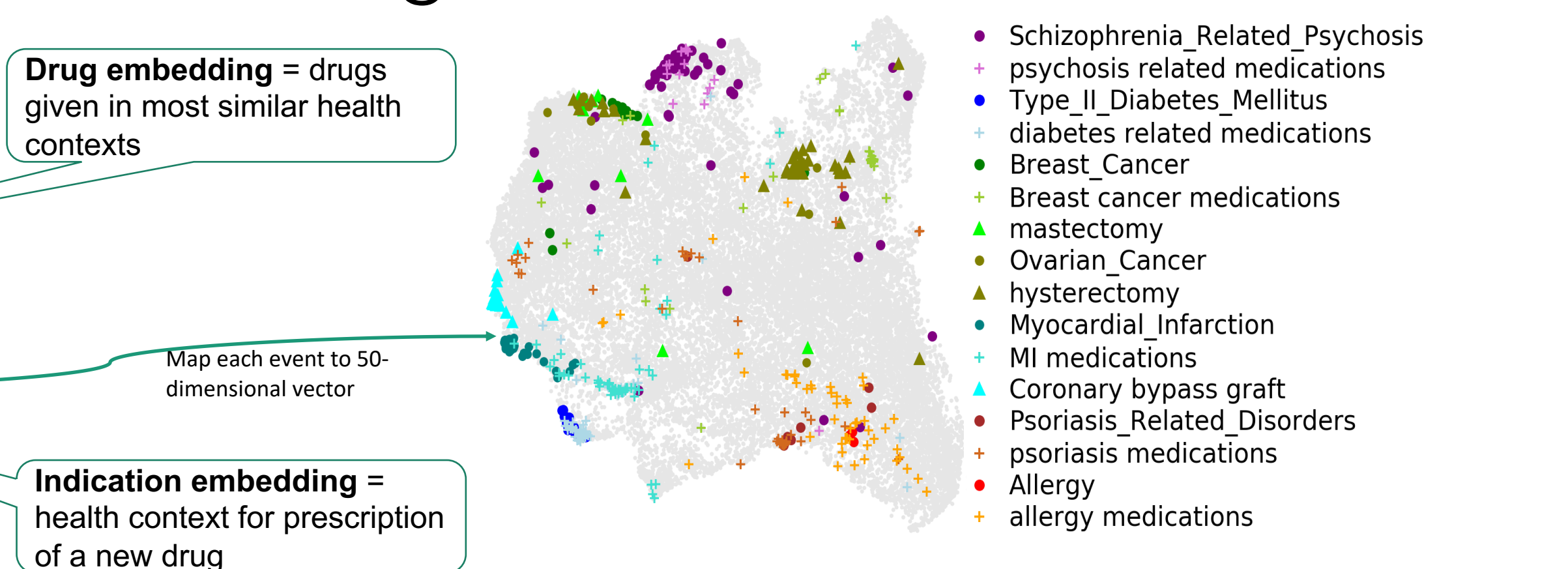
- Expert Task 1** Find suitable comparator drug
- Expert Task 2** Design matching—identify confounders



Medical knowledge created the health data: can we extract this meaning from the health data to create embeddings?



Embeddings relate codes to health needs



Embedding can match for key confounders

